
Transportation & Economic Corridors

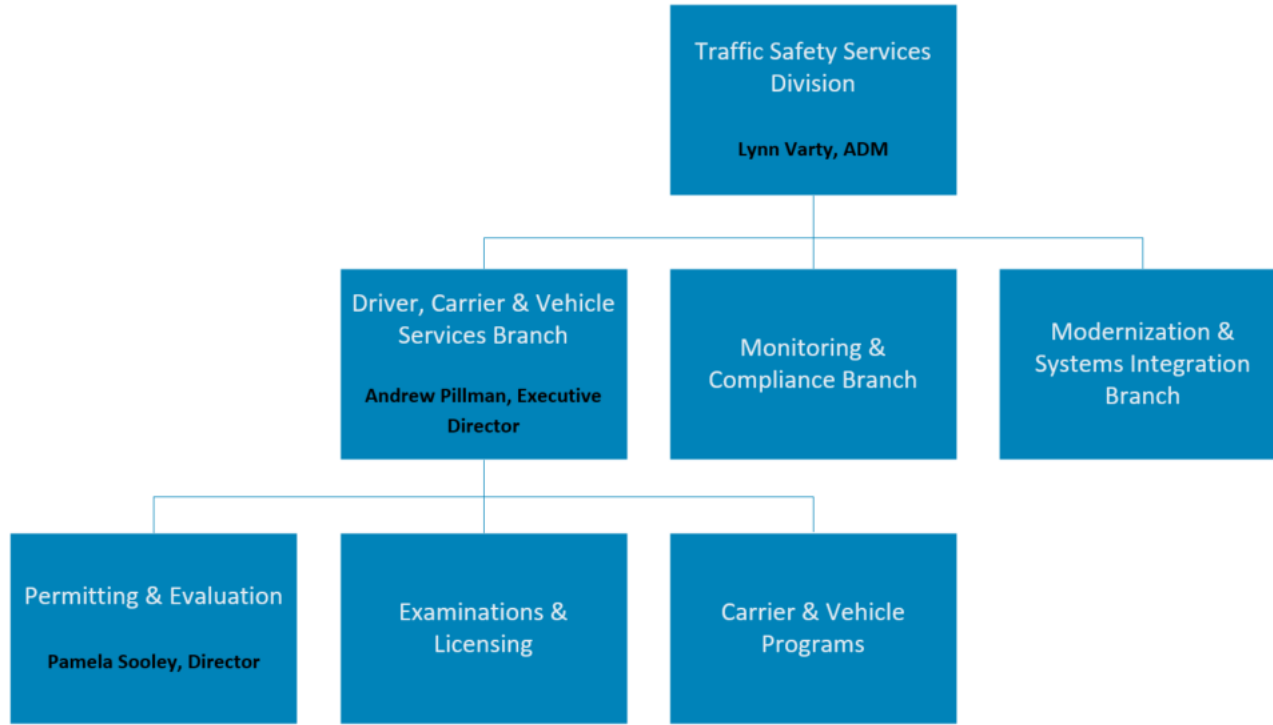
Task Force on Vehicle Weights
and Dimensions Policy

Pamela Sooley

Director, Permitting & Approvals



Organizational Structure – January 2024



Permitting & Evaluation

- Rejoins the Central Permit Office and Transport Engineering team.
 - Transport Engineering oversees bridge load evaluations, vehicle configuration reviews, vehicle dynamics, etc.
- Provides for better oversight of our High Load Corridor, Frost Probe Network, and Log Haul programs.
- Exemptions will continue to be issued out of this area:
 - Vehicle equipment exemptions
 - Hours of Service Exemptions
 - Carrier Safety Exemptions

Business Modernization/Transformation

- New TRAVIS Permitting/Routing system is still being developed.
 - TRAVIS provides permits for most jurisdictions within the Province, including municipalities and counties.
 - Still in early development, the new system plans to expand on current TRAVIS capabilities and modernizes the permitting process.
 - Plan to implement by January 2025.
- Government of Alberta began a 5 year initiative to modernize Alberta Registry services, which will include Land Titles, Motor Vehicles, Corporate, Personal Property and Vital Statistics.
 - Partnering with Arizona DMV to use their Motor Vehicle system as a base.
 - Aims to transform the way motor vehicle services are both obtained and delivered.

Permitting & Evaluation Transportation and Economic Corridors

Pamela Sooley

pamela.sooley@gov.ab.ca